



EDDAS – Bridge Module

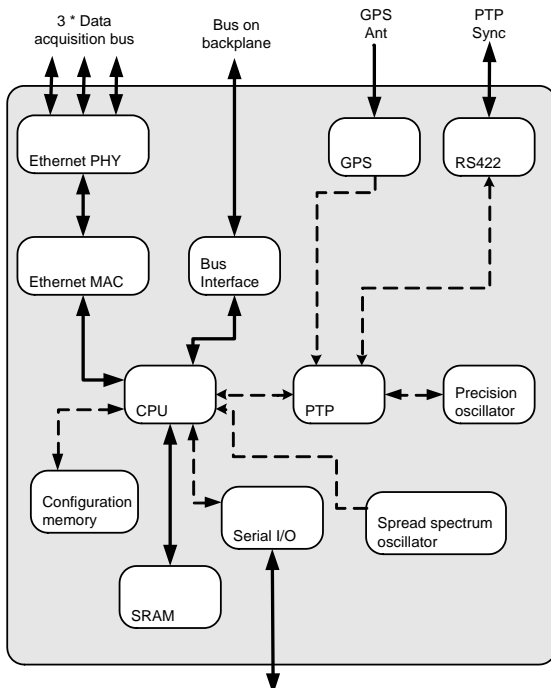
EE 250-5302 Bridge Module



Characteristics:

- Rugged design for flight environment
- EE1588 PTP Grandmaster capable.
- GPS NMEA message input. (Time).
- Three Ethernet connections (10/100M).
- Operation temp.: -40°C to +85°C

Preliminary datasheet.



Functionality

- The bridge routes communication between all functional modules in an Equipment Unit and to other Equipment units in an EDDAS system.
- Through Bridges in Equipment units you may build an EDDAS system like a tree, ring or matrix.
- The module implements PTP time synchronization protocol and provides clock and time information to the modules. The PTP implementation ensures a maximum synchronization error of 100ns.
- The module can be connected to a GPS receiver and act as a PTP Grandmaster for an EDDAS system.