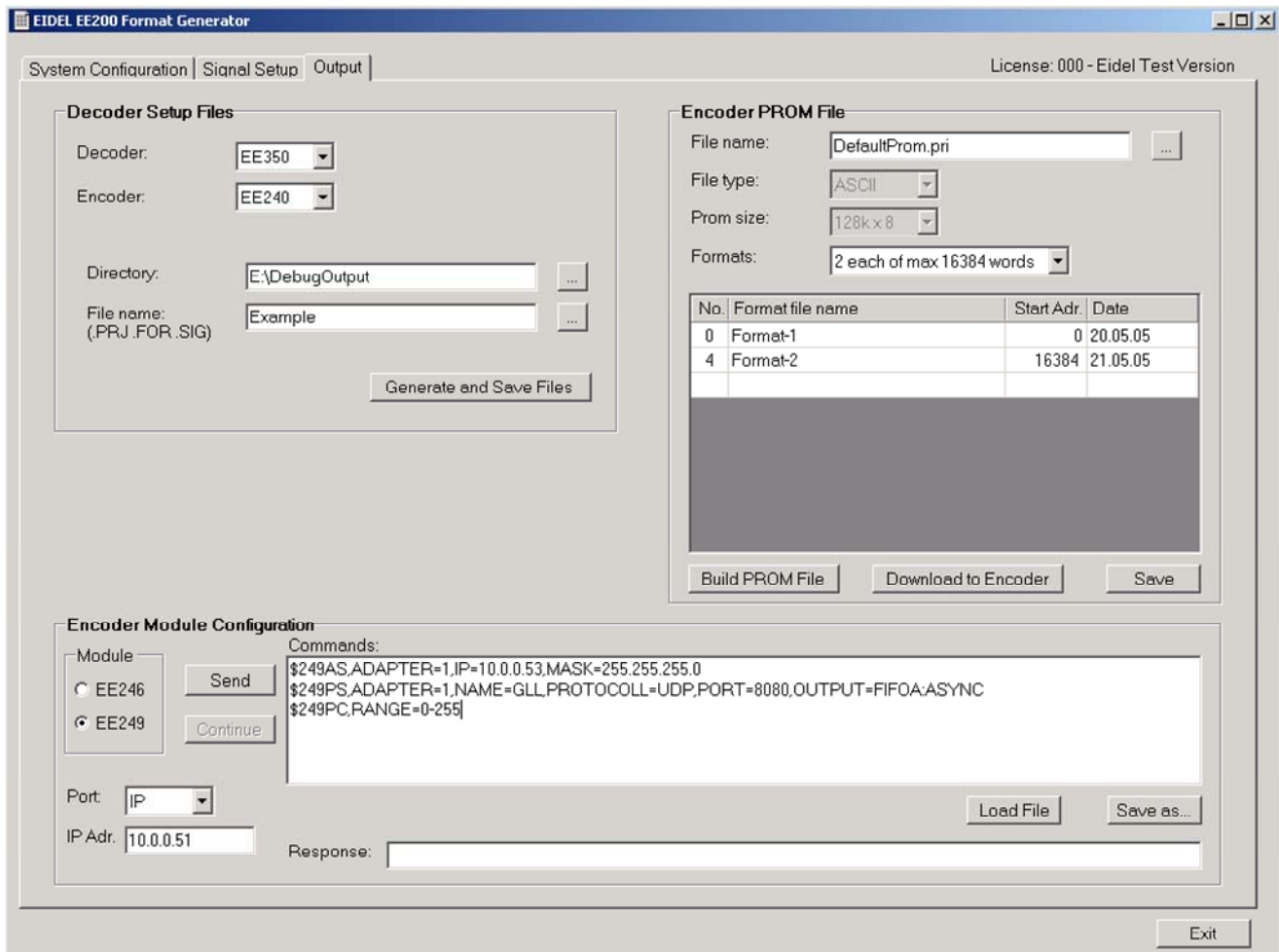


EE 200 FORMAT GENERATOR

PCM Encoder Configuration Software



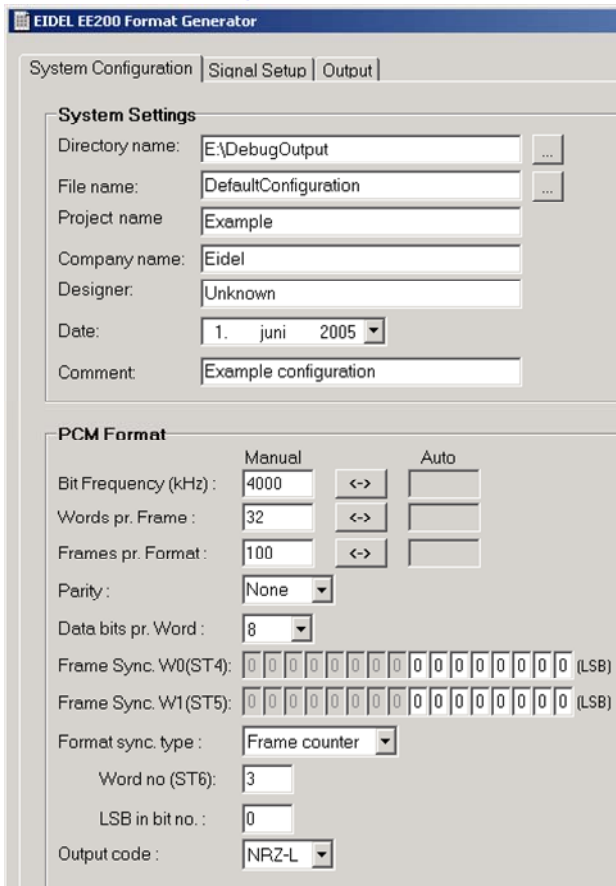
- Configuration software for the EIDEL EE240 PCM Encoder System.
- Automatic generation of optimum PCM format.
- Built-in communication protocol for download to the EE240 PCM Encoder.
- Command Packet editor and transmission to EE240 Conditioning Modules.
- Intuitive menus for System Configuration, Signal Setup and Output.
- Generates Setup files for Eidel EE350 and EE315 PCM Decoders.
- System documentation to file and printer.
- Version 5 runs under Windows NT/2000/XP.

EIDSVOLL ELECTRONICS AS

Nedre Vilberg vei 8 – N-2080 Eidsvoll – Norway
Phone: +47 6395 9700 – Fax: +47 6395 9710
E-mail: eidel@eidel.no – www.eidel.no



System Configuration.



System Settings.

File and directory selections use standard Windows setup for file recall and save locations. Text fields may be filled in for system documentation.

PCM Format.

The basic structure information of the PCM format to be generated is entered. The first parameters may be locked manually or left for automatic calculation.

Signal Summary.

The signals of the Signal Menu are summarised showing the number of signals per sample rate (commutation rate) group.

PCM Format Status.

The result of a format calculation is shown. Advice is given if signals cannot be placed due to i.e. few words per frame.

Signal Setup.

Known information of all signals for the PCM format is entered in a table with one line per signal. The minimum information is Signal Name, Type (analog/digital etc) and required Sample Rate. Other parameters may be entered and manually locked if desired. Click on **Calculate PCM Format** to generate a format based on the given inputs. The table is filled in with remaining parameters in Auto mode. A green field indicates completion. If problems are found, status messages are listed in the System Configuration menu.

Signals can be grouped, numbered and moved in the table. The signal list with selected information can be printed or stored to file.

Signal scaling and limit check information for the EE350 PCM Decoder may be added.

Output.

Decoder Setup Files.

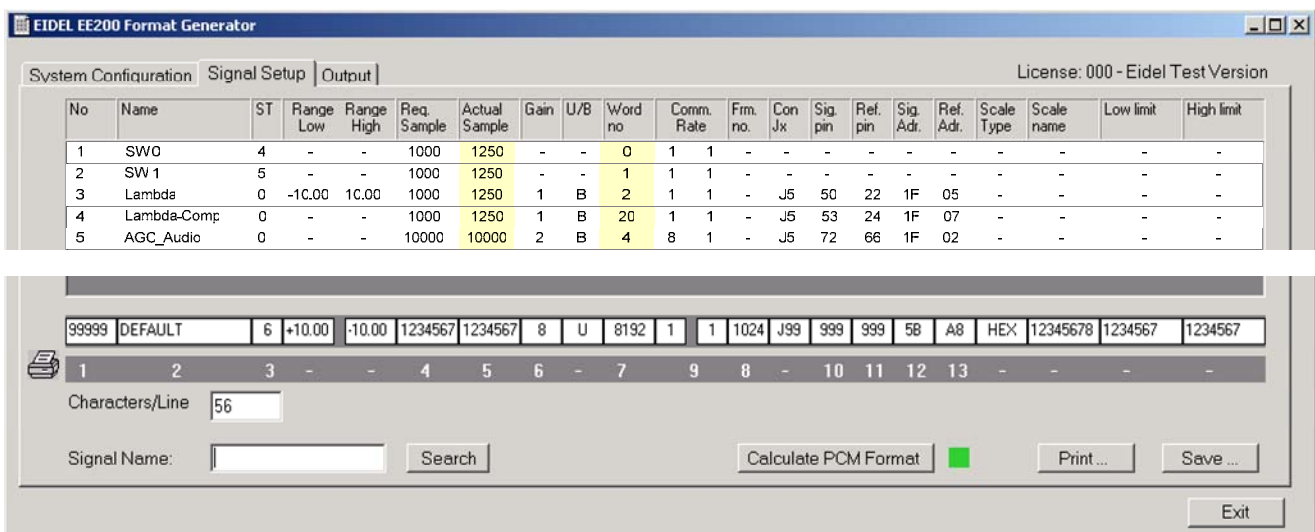
The type of Eidel PCM Encoder and Decoder is specified. Setup files for the Decoder may be generated and stored to a selectable file directory\name.

Encoder Module Configuration.

Some of the EE240 signal conditioning modules are configured by sending text Command Packets, CP. A text editor window is included for CP generation. CPs may be saved and recalled. Once the selected module is set to configure enable, the CP can be sent to the module and stored in the module flash memory. The response from the module is listed.

Encoder PROM File.

The EE240 Encoder has a Flash memory for the PCM format information. The memory can be split for up to eight independent PCM formats. The window has selections for number of formats and the names of formats to be downloaded. Encoder PROM files can be saved and recalled.



No	Name	ST	Range Low	Range High	Req. Sample	Actual Sample	Gain	U/B	Word no	Comm. Rate	Frm. no.	Con Jx	Sig. pin	Ref. pin	Sig. Adr.	Ref. Adr.	Scale Type	Scale name	Low limit	High limit	
1	SW0	4	-	-	1000	1250	-	-	0	1	1	-	-	-	-	-	-	-	-	-	-
2	SW 1	5	-	-	1000	1250	-	-	1	1	1	-	-	-	-	-	-	-	-	-	-
3	Lambda	0	-10.00	10.00	1000	1250	1	B	2	1	1	-	J5	50	22	1F	05	-	-	-	-
4	Lambda-Comp	0	-	-	1000	1250	1	B	20	1	1	-	J5	53	24	1F	07	-	-	-	-
5	AGC_Audio	0	-	-	10000	10000	2	B	4	8	1	-	J5	72	66	1F	02	-	-	-	-

99999 | DEFAULT | 6 | +10.00 | -10.00 | 1234567 | 1234567 | 8 | U | 8192 | 1 | 1 | 1024 | J99 | 999 | 999 | 5B | A8 | HEX | 12345678 | 1234567 | 1234567

1 2 3 - 4 5 6 - 7 9 8 - 10 11 12 13 - - -

Characters/Line: 56

Signal Name: [] Search [] Calculate PCM Format [] Print... [] Save... [] Exit []

200ds20_IN0605

EIDSVOLL ELECTRONICS AS

Nedre Vilberg vei 8 – N-2080 Eidsvoll – Norway
 Phone:+47 6395 9700 – Fax:+47 6395 9710
 E-mail: eidel@eidel.no – www.eidel.no

